



ALUMINUM FRAME

Mobile Wall

Updated September 29, 2020

SWIFTSPACE
www.swiftspaceinc.com



1. Sizes

Panels come in standard heights of 52" or 76" and widths of 24" or 48".

Walls can be made smaller to any custom dimension at no additional cost

2. Finishes

Panels come in any of our 15 standard laminates or whiteboard laminate, ezoBord, Acrylic or Plexiglas

3. Configurations

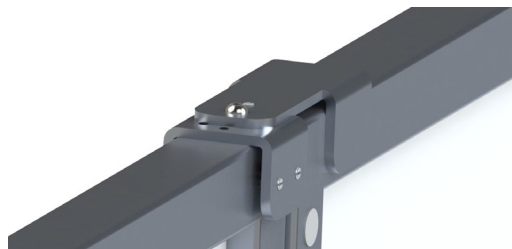
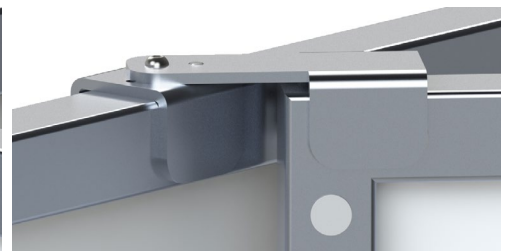
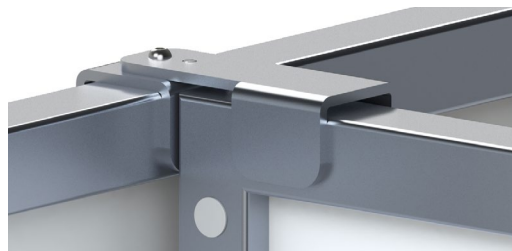
Our brackets allow for multiple configurations including T-shape, L-shape, or 45 degree angles

4. Additional Options

Additional options include: Anti-Microbial spray, hang on whiteboard or accessory rails, power troughs and brackets for hanging TVs or monitors

5. Casters

Mobile walls come standard with casters that are 2.5" in diameter with grey rubber wheels that swivel and lock. The mobile wall can be ordered with castered legs that allow it to be used as a stand alone wall to create visual privacy between two stations or walls



Brackets come standard with set screws - please specify for thumbscrews

For more information about our products or to schedule a demo visit www.swiftspaceinc.com

